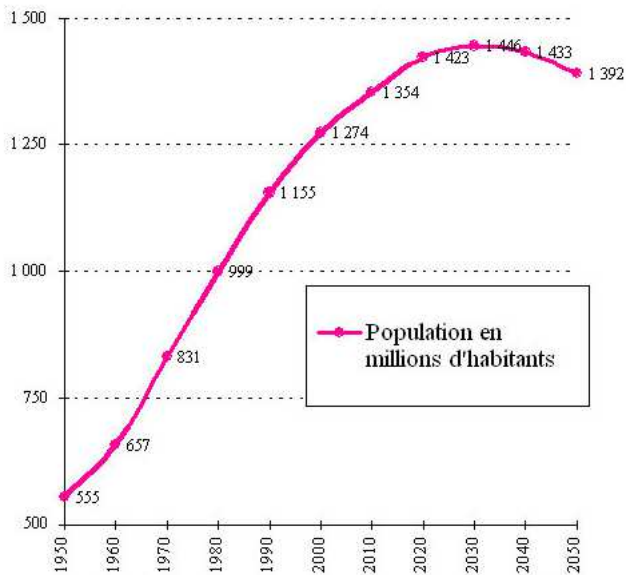
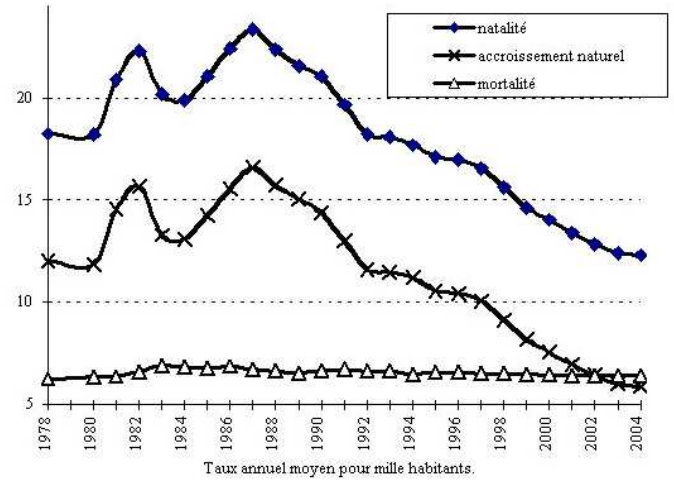




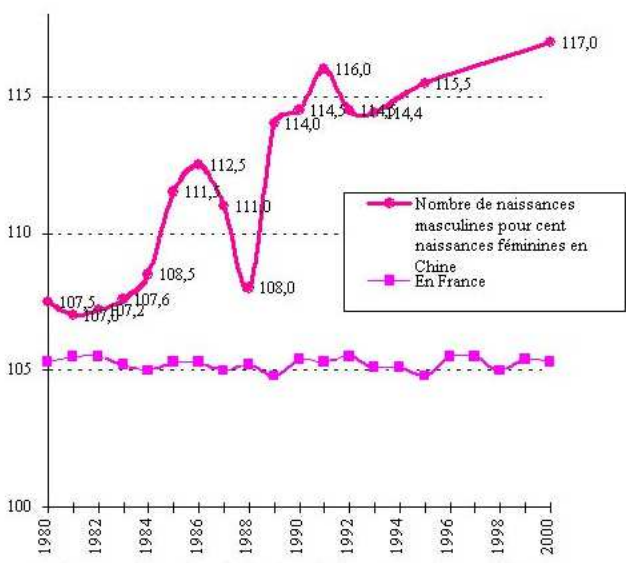
### Population de la Chine : évolution depuis 1950 et projection moyenne pour 2050



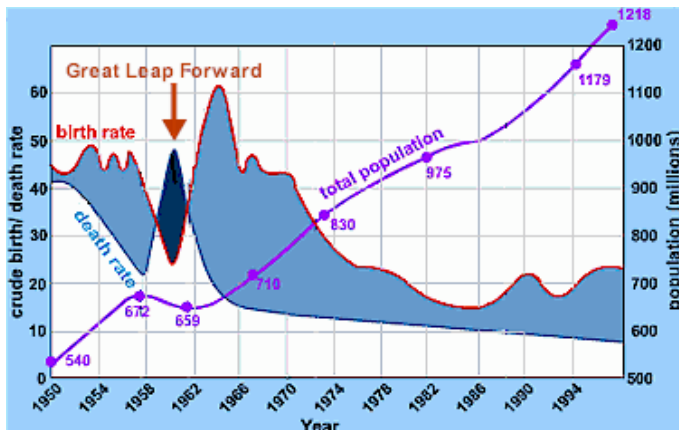
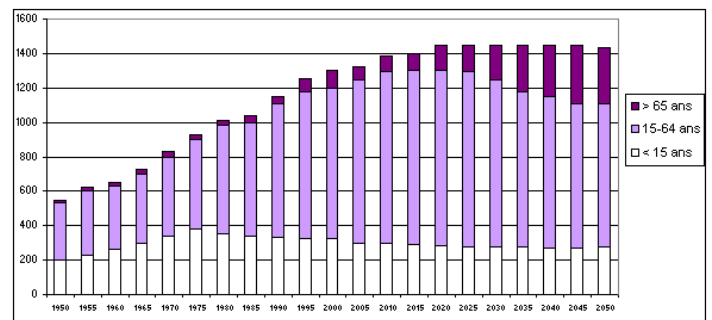
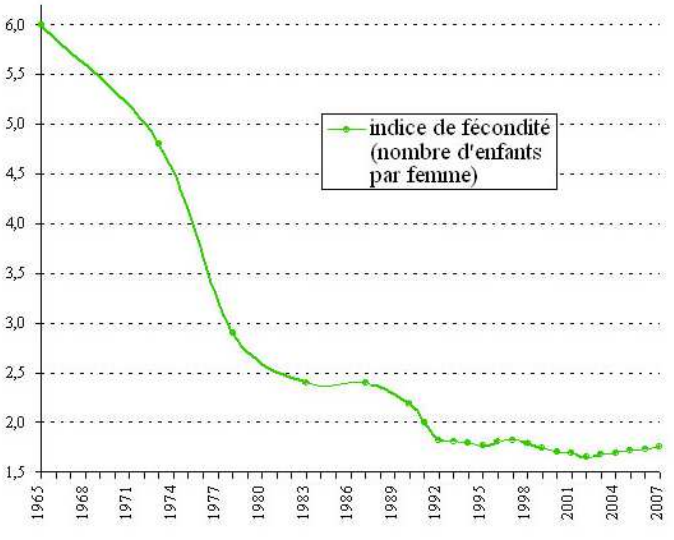
### LE MOUVEMENT NATUREL EN CHINE



### Le taux de masculinité des naissances en Chine



### La fécondité en Chine



Sources :

- <http://www.diploweb.com/Chine-vers-un-nouvel-enlèvement.html>
- <http://wasatchecon.files.wordpress.com/2010/04/chinapop2.gif>
- <http://www.senat.fr/rap/r05-307/r05-3071.gif>